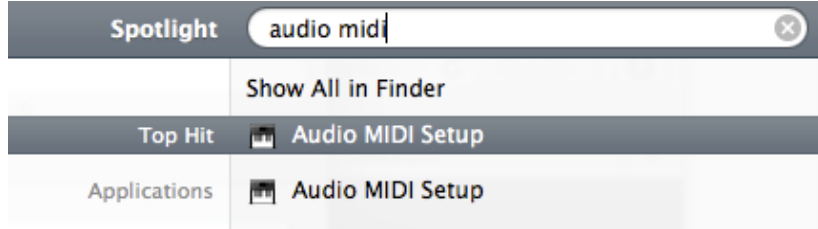
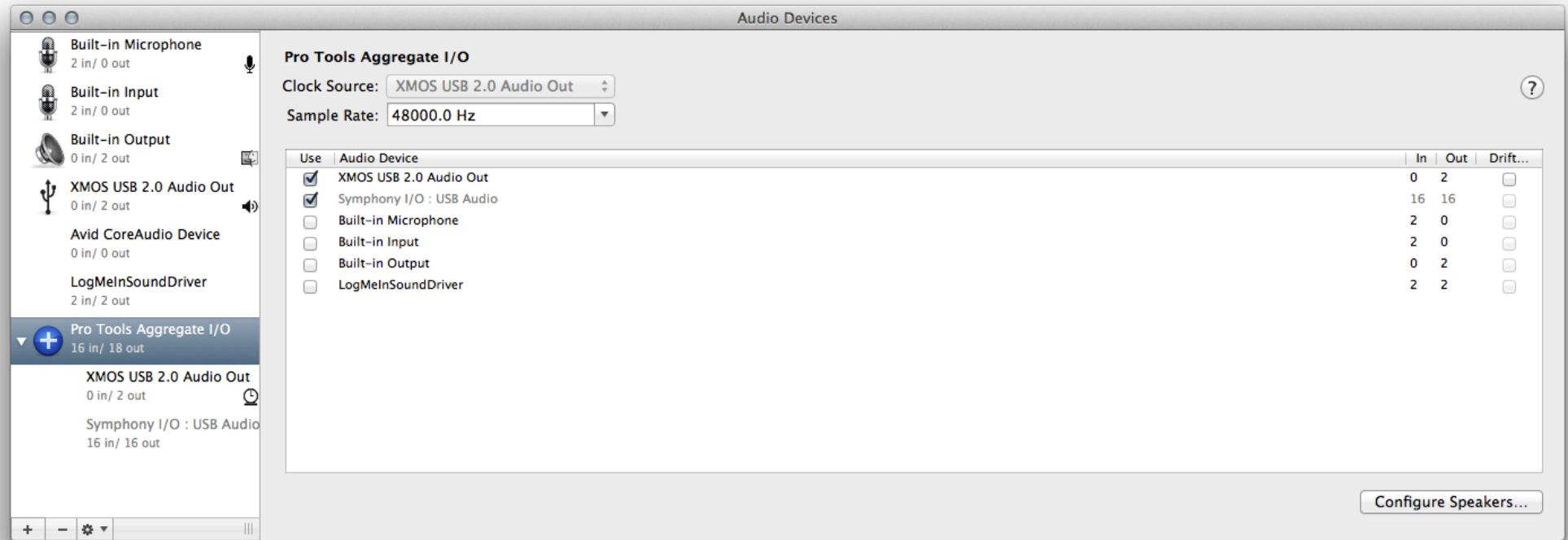


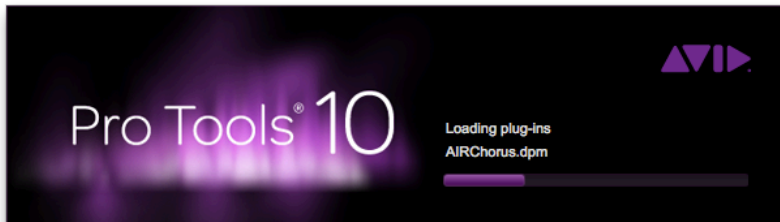
PRO TOOLS AUDIO AGGREGATION SETUP



Open up the “Audio MIDI Setup”
This can be located using spotlight or navigated to via >>Applications>>Utilities>>Audio MIDI Setup

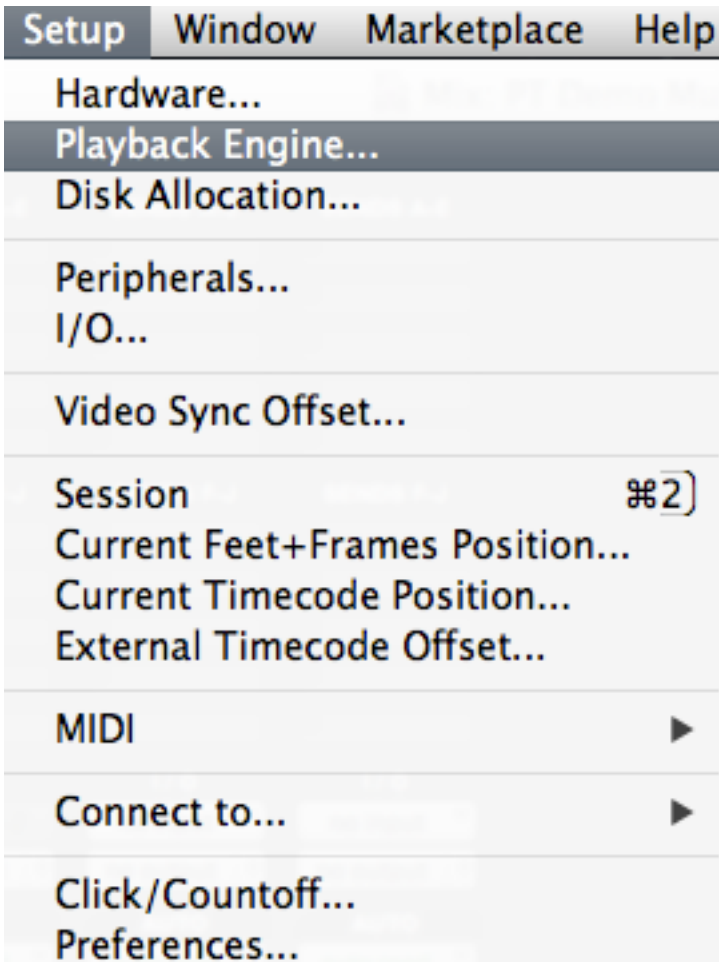


Highlight “Pro Tools Aggregate I/O”
Select the interfaces to use for this session.
Deselect the interfaces you do not want active
Deselect “drift” (termed “resample” in earlier OS X)
Note: greyed out interfaces are not available



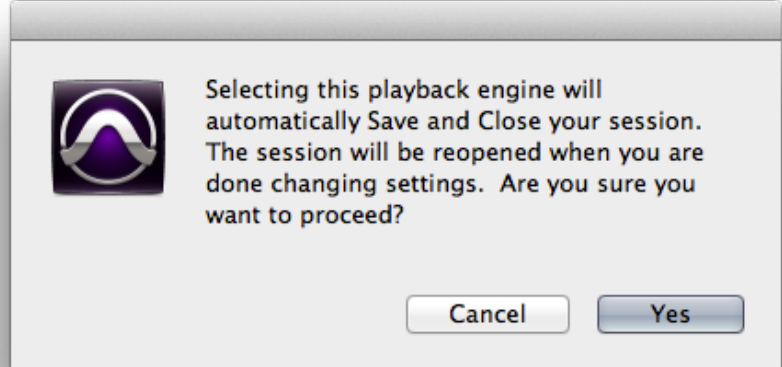
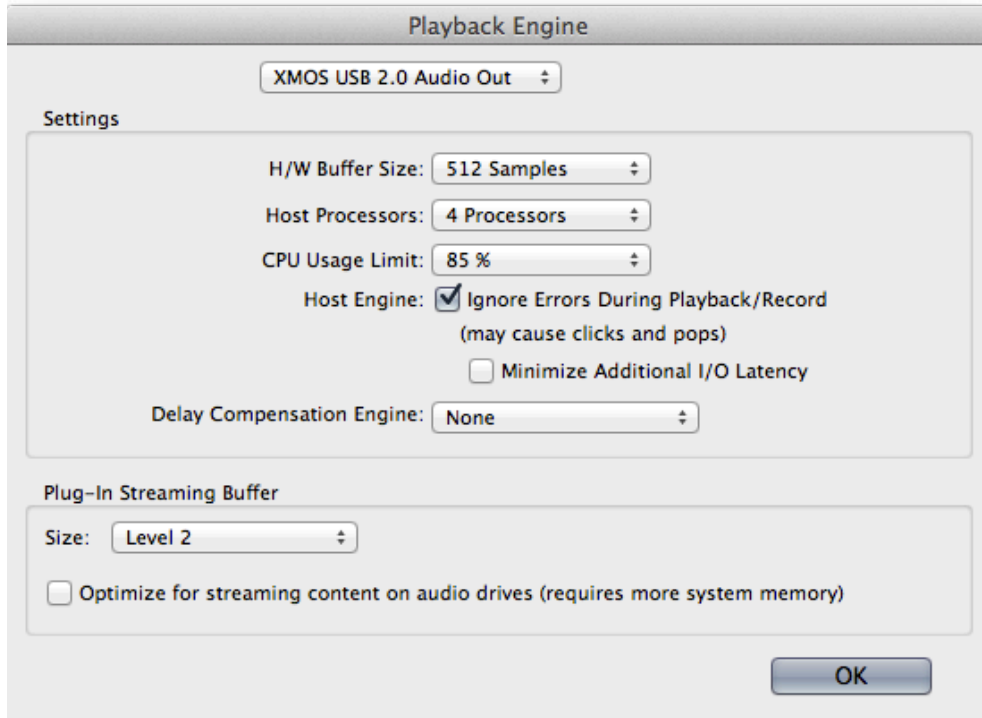
Open up the Pro Tools session

This can be located using spotlight or navigated to via >>Applications>>Avid>>Pro Tools>>Pro Tools



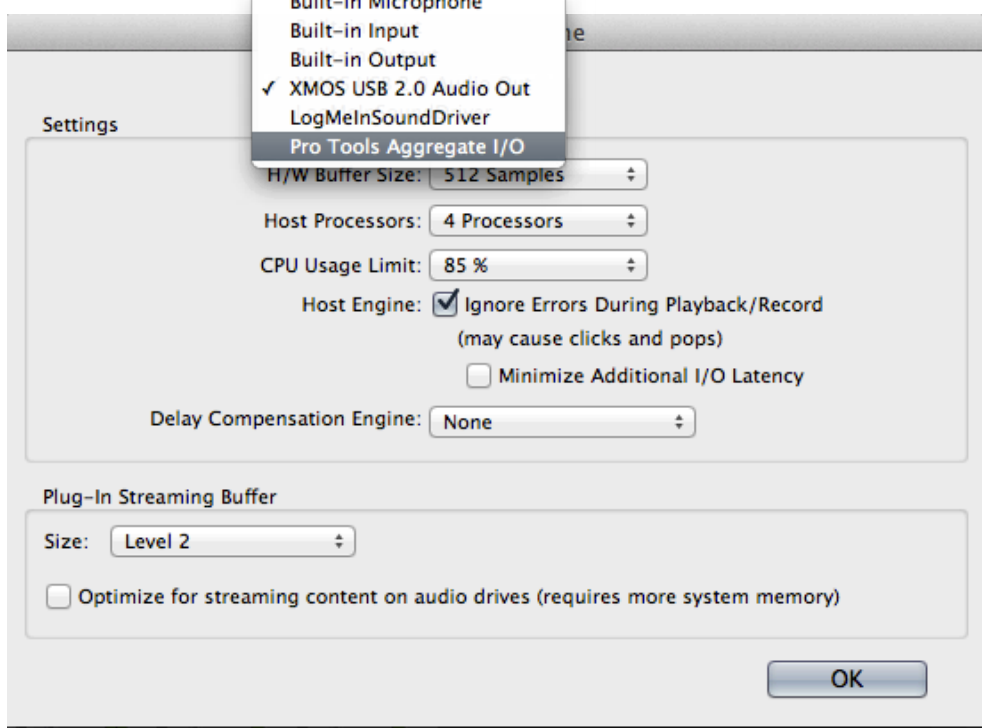
Click on "Setup"

From the dropdown menu, select "Playback Engine"

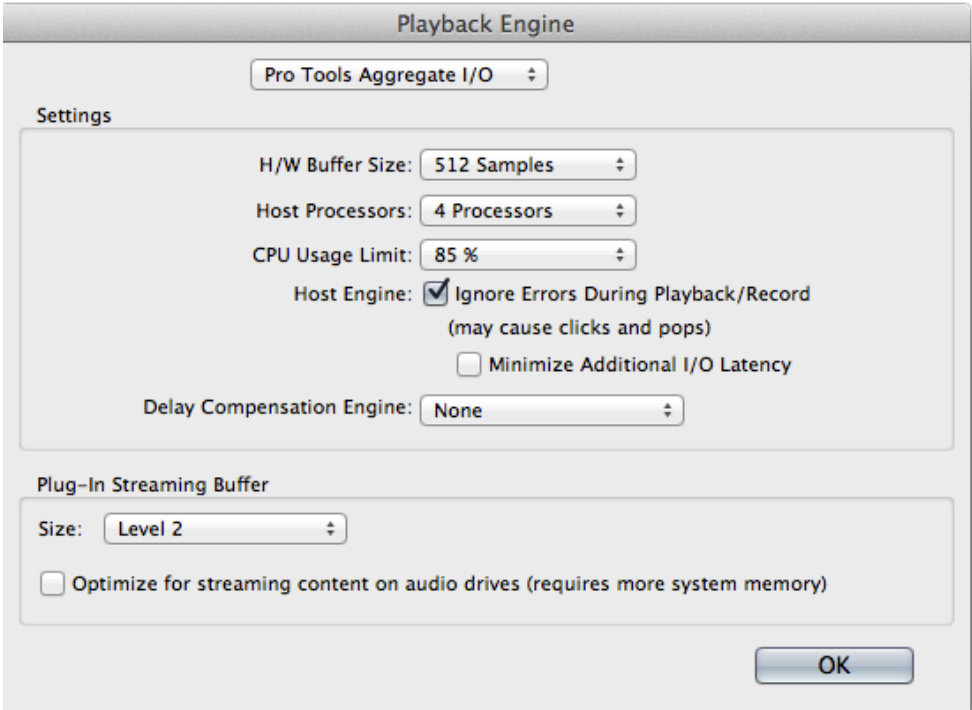


Select "Yes" to Save and Close your session.

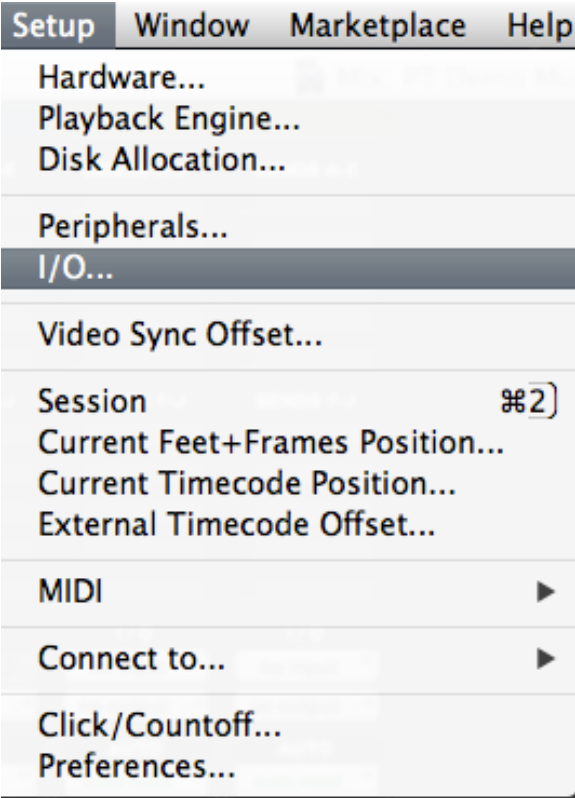
Switch the playback engine



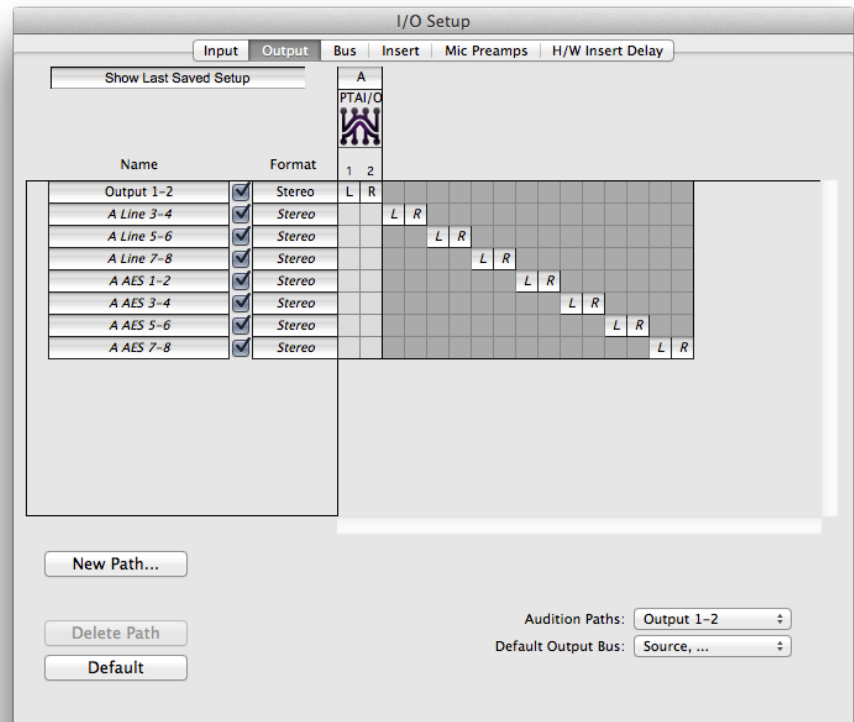
From Default to "Pro Tools Aggregate I/O"



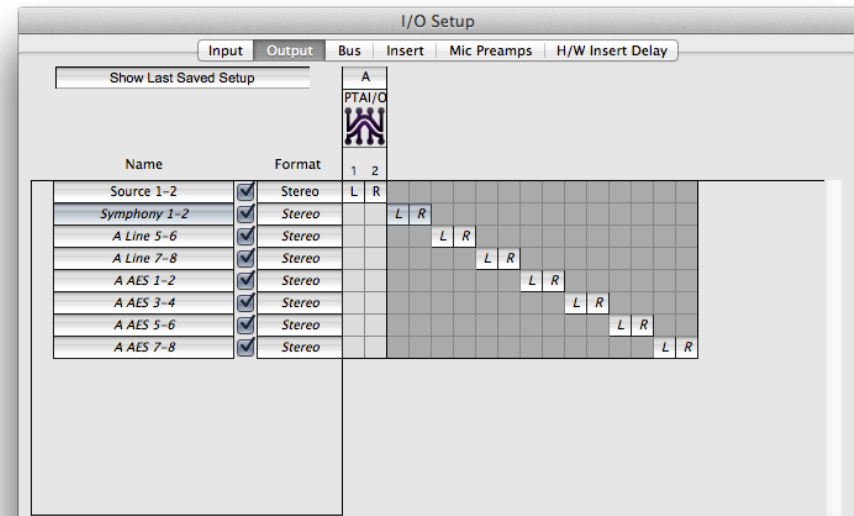
Select "OK" to proceed



Click on "Setup"
From the dropdown menu, select "I/O"



Select "Default" to reset the Output paths.
Repeat for "Bus" and "Insert" as well.



Double click on the "Names" to relabel them.
Otherwise there may be multiple duplicated listings (i.e. "1-2" listed 2 times).



Assign your tracks to the appropriate input and output devices.